



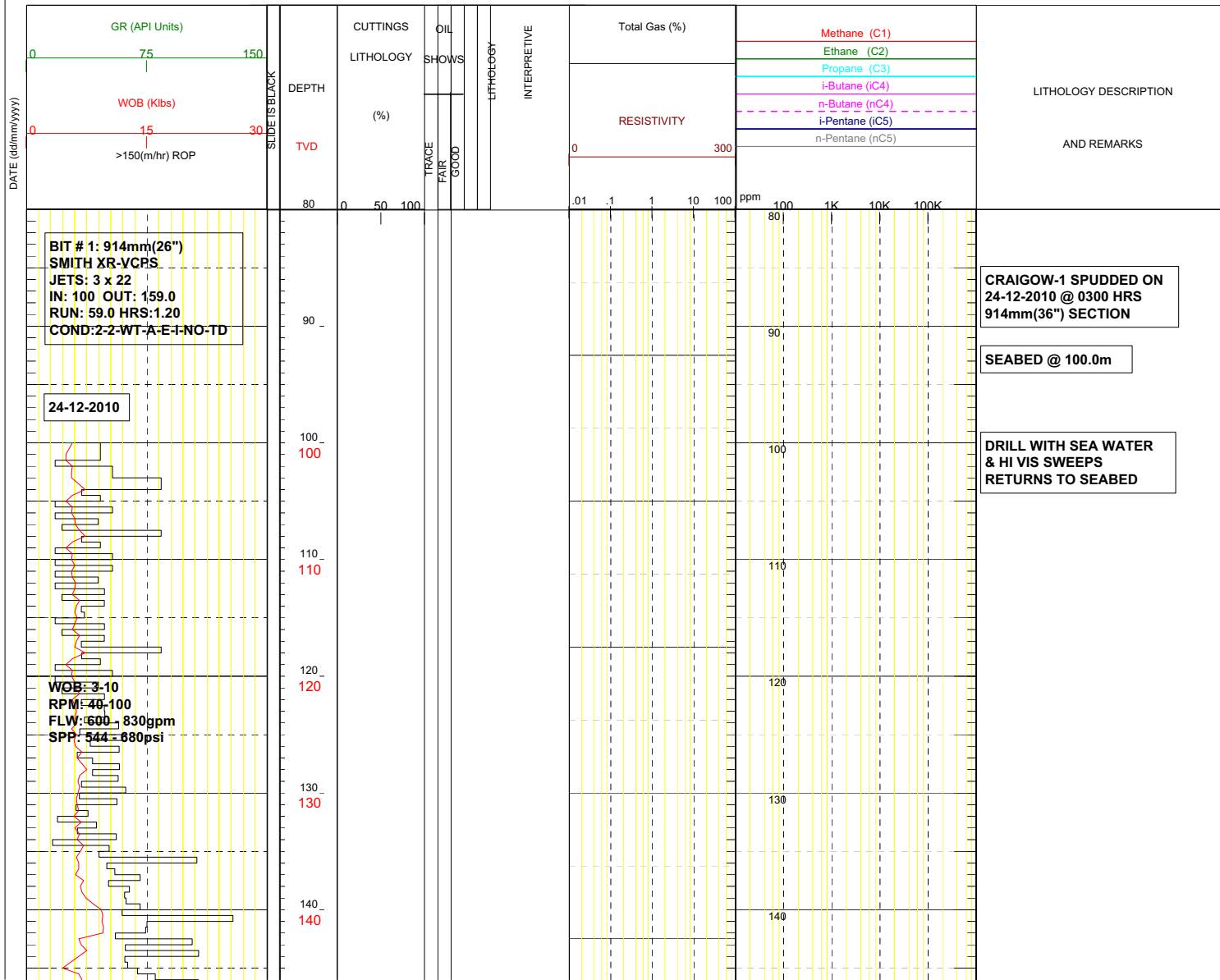
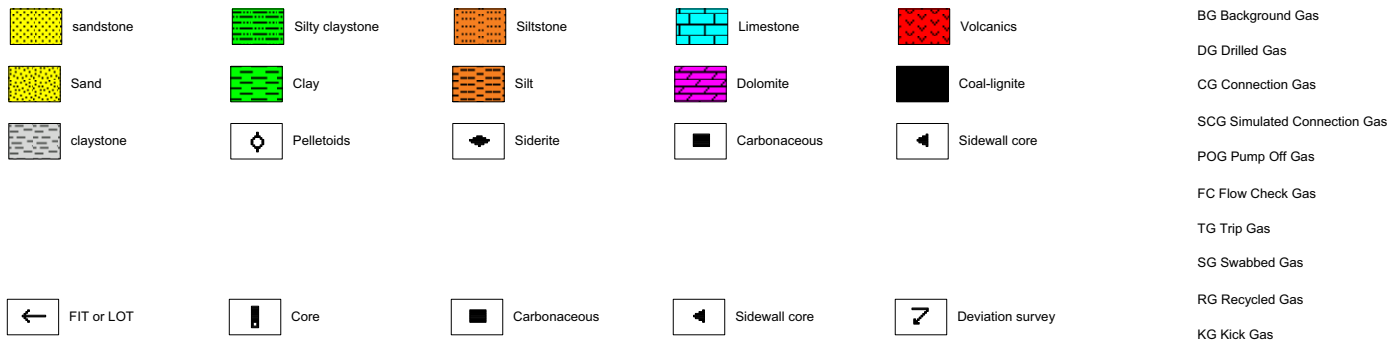
# FORMATION EVALUATION LOG

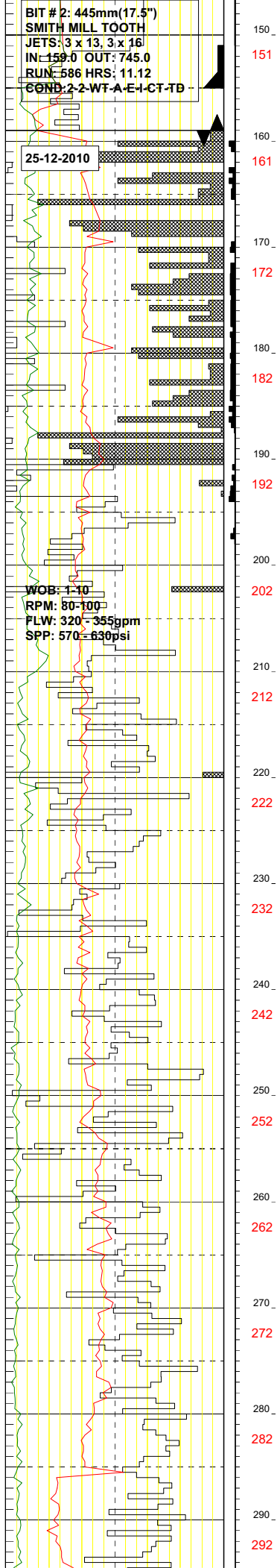
## CRAIGOW 1



FROM : (mt) 80 TO : (mt) 1810 SCALE : 1/ 500

Client: TAP OIL Field : CRAIGOW Rig Name : KAN TAN IV RT ELEV (m) : 26 Final TD (m) : 1800.00  
Well : CRAIGOW 1 Country : AUSTRALIA Rig Type : SEMI SUB MSL-RT (m) : 74 Final TVD (m) : 1799.92





30" CONDUCTOR  
SET @ 157.0m

26" x 36" SURFACE HOLE  
DRILLED TO 159.0m REACHED  
SECTION TD @ 0430 HRS ON  
24-12-2010

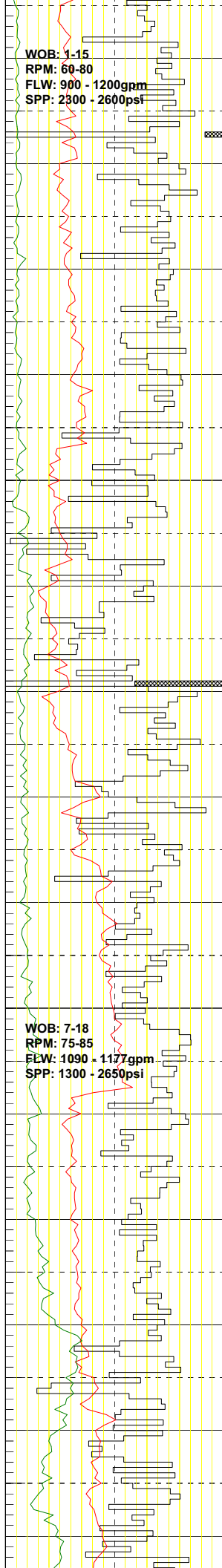
START 17.5" SECTION  
@ 0400 HRS ON  
25-12-2010

SURVEY @ 176.22m  
INC: 0.15° AZI: 218.73°  
TVD: 176.22m

DRILL WITH SEA WATER  
& HI VIS SWEEPS  
RETURNS TO SEABED

SURVEY @ 204.25m  
INC: 0.32° AZI: 233.37°  
TVD: 204.25m

SURVEY @ 235.96m  
INC: 0.33° AZI: 219.33°  
TVD: 235.96m



300 \_  
302  
310 \_  
312  
320 \_  
322  
330 \_  
332  
340 \_  
342  
350 \_  
352  
360 \_  
362  
370 \_  
372  
380 \_  
382  
390 \_  
392  
400 \_  
402  
410 \_  
412  
420 \_  
422  
430 \_  
432  
440 \_  
442

300  
310  
320  
330  
340  
350  
360  
370  
380  
390  
400  
410  
420  
430  
440

SURVEY @ 297.00m  
INC: 0.40° AZI: 91.96°  
TVD: 297.00m

DRILL WITH SEA WATER  
& HI VIS SWEEPS  
RETURNS TO SEABED

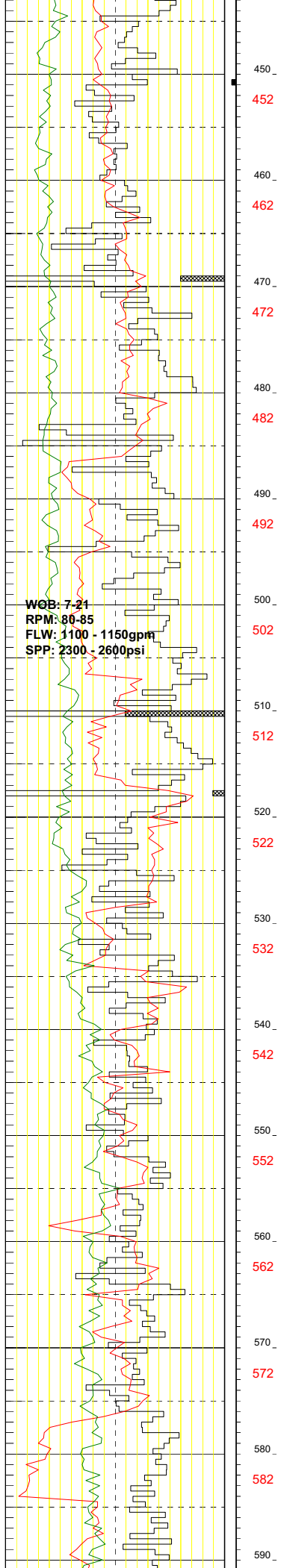
SURVEY @ 323.33m  
INC: 0.18° AZI: 99.51°  
TVD: 323.33m

SURVEY @ 351.47m  
INC: 0.49° AZI: 238.19°  
TVD: 351.47m

SURVEY @ 379.67m  
INC: 0.50° AZI: 200.42°  
TVD: 379.67m

DRILL WITH SEA WATER  
& HI VIS SWEEPS  
RETURNS TO SEABED

SURVEY @ 437.63m  
INC: 0.22° AZI: 246.22°  
TVD: 437.63m



450  
452  
460  
462  
470  
472  
480  
482  
490  
492  
500  
502  
510  
512  
520  
522  
530  
532  
540  
542  
550  
552  
560  
562  
570  
572  
580  
582  
590

450  
460  
470  
480  
490  
500  
510  
520  
530  
540  
550  
560  
570  
580  
590

SURVEY @ 466.66m  
INC: 0.20° AZI: 245.13°  
TVD: 466.66m

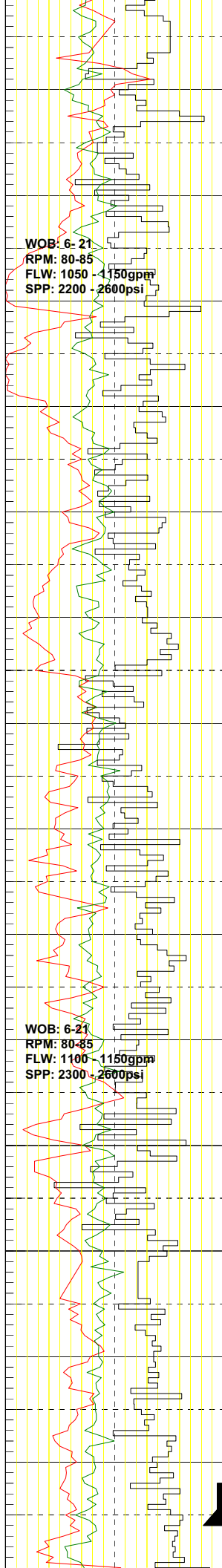
SURVEY @ 494.84m  
INC: 0.09° AZI: 24.79°  
TVD: 494.84m

DRILL WITH SEA WATER  
& HI VIS SWEEPS  
RETURNS TO SEABED

SURVEY @ 523.84m  
INC: 0.09° AZI: 12.10°  
TVD: 523.84m

SURVEY @ 553.90m  
INC: 0.22° AZI: 159.47°  
TVD: 553.90m

SURVEY @ 583.40m  
INC: 0.25° AZI: 220.99°  
TVD: 583.40m



600  
602  
610  
612  
620  
622  
630  
632  
640  
642  
650  
652  
660  
662  
670  
672  
680  
682  
690  
692  
700  
702  
710  
715  
720  
725  
730  
735  
740

600  
610  
620  
630  
640  
650  
660  
670  
680  
690  
700  
710  
720  
730

DRILL WITH SEA WATER  
& HI VIS SWEEPS  
RETURNS TO SEABED

SURVEY @ 613.00m  
INC: 0.13° AZI: 1187.03°  
TVD: 613.00m

SURVEY @ 642.75m  
INC: 0.24° AZI: 156.94°  
TVD: 642.74m

SURVEY @ 670.88m  
INC: 0.11° AZI: 195.47°  
TVD: 670.87m

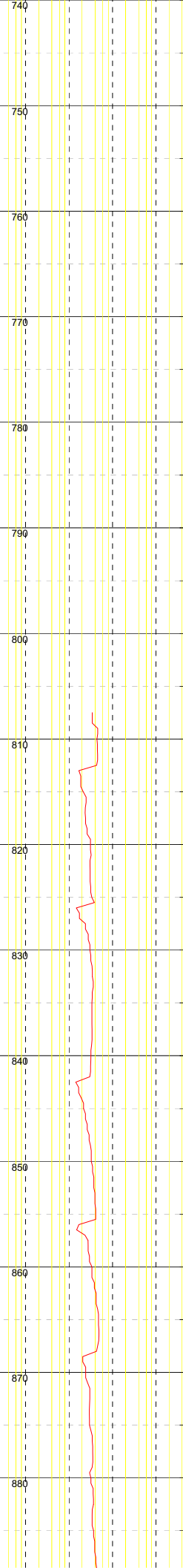
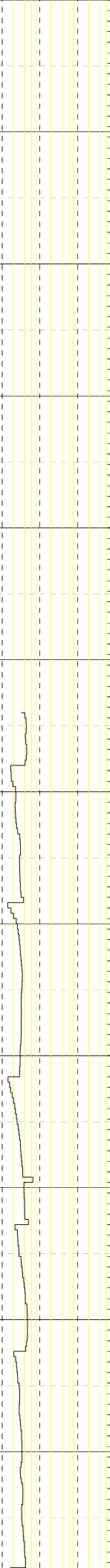
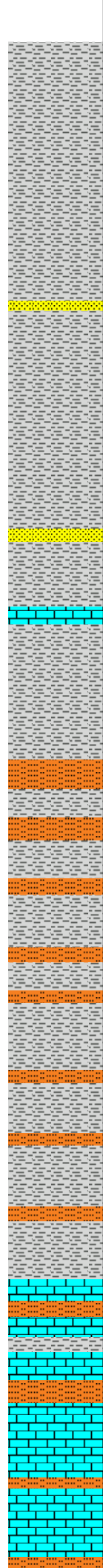
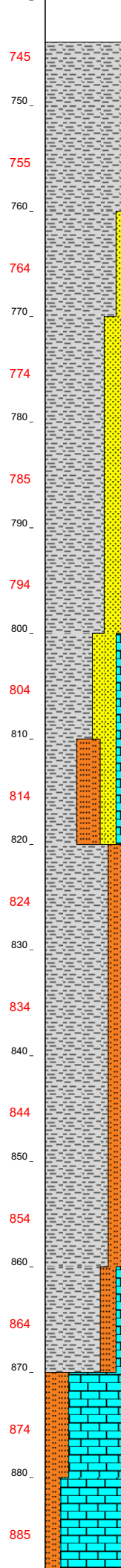
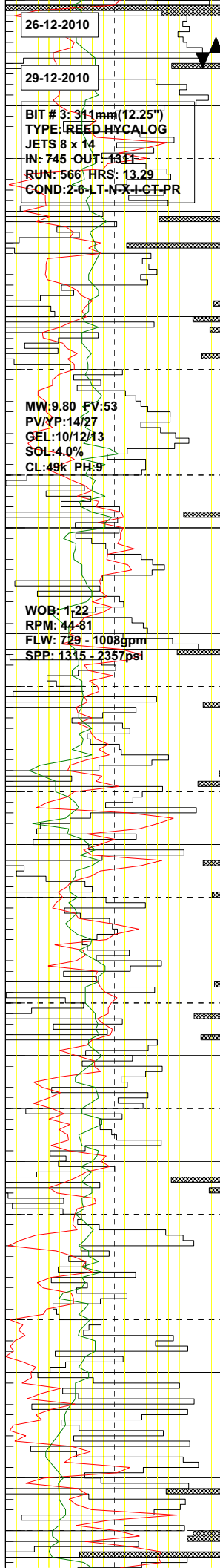
DRILL WITH SEA WATER  
& HI VIS SWEEPS  
RETURNS TO SEABED

SURVEY @ 700.02m  
INC: 0.09° AZI: 260.83°  
TVD: 700.01m

SURVEY @ 723.95m  
INC: 0.07° AZI: 20.35°  
TVD: 723.94m

13 3/8" CASING SHOE  
SET @ 736m

17.5" HOLE DRILLED



TO 745.0m SECTION TD  
REACHED @ 0000 HRS  
ON 26-12-2010

CONDUCT LOT @ 748.0m  
14.9ppg EMW.

START 12.25" SECTION  
ON 29-12-2010 @ 0600 HRS

SURVEY @ 763.59m  
INC: 0.25° AZI: 253.49°  
TVD: 763.58m

CLAYSTONE: lt-med gry,  
occ dk brn, sft-frn, blk, y,  
silty, calc, foss frag, foram,  
tr carb spks, tr crpxln  
pyr aggs.

SURVEY @ 792.60m  
INC: 0.26° AZI: 270.64°  
TVD: 792.59m

SANDSTONE: wh-lt gry,  
mott wh, trns, fri, vf-f,  
sbandg-sbrnd, silty, arg, com  
f calc foss, tr carb spks,  
p vis por, no show.

SILTSTONE: lt gry-lt brnsh  
gry, sft, blk, y, arg, sndy, calc,  
grd to vf SST.

SURVEY @ 821.35m  
INC: 0.25° AZI: 230.08°  
TVD: 821.34m

CLAYSTONE: lt-med gry,  
occ dk brn, sft-frn, blk, y,  
silty, calc, foss frag, foram,  
tr carb spks, tr crpxln  
pyr aggs.

LIMESTONE: wh-pl yel, lt  
gry, sft-fri, blk, y, com foss  
debris in chlk mtz.

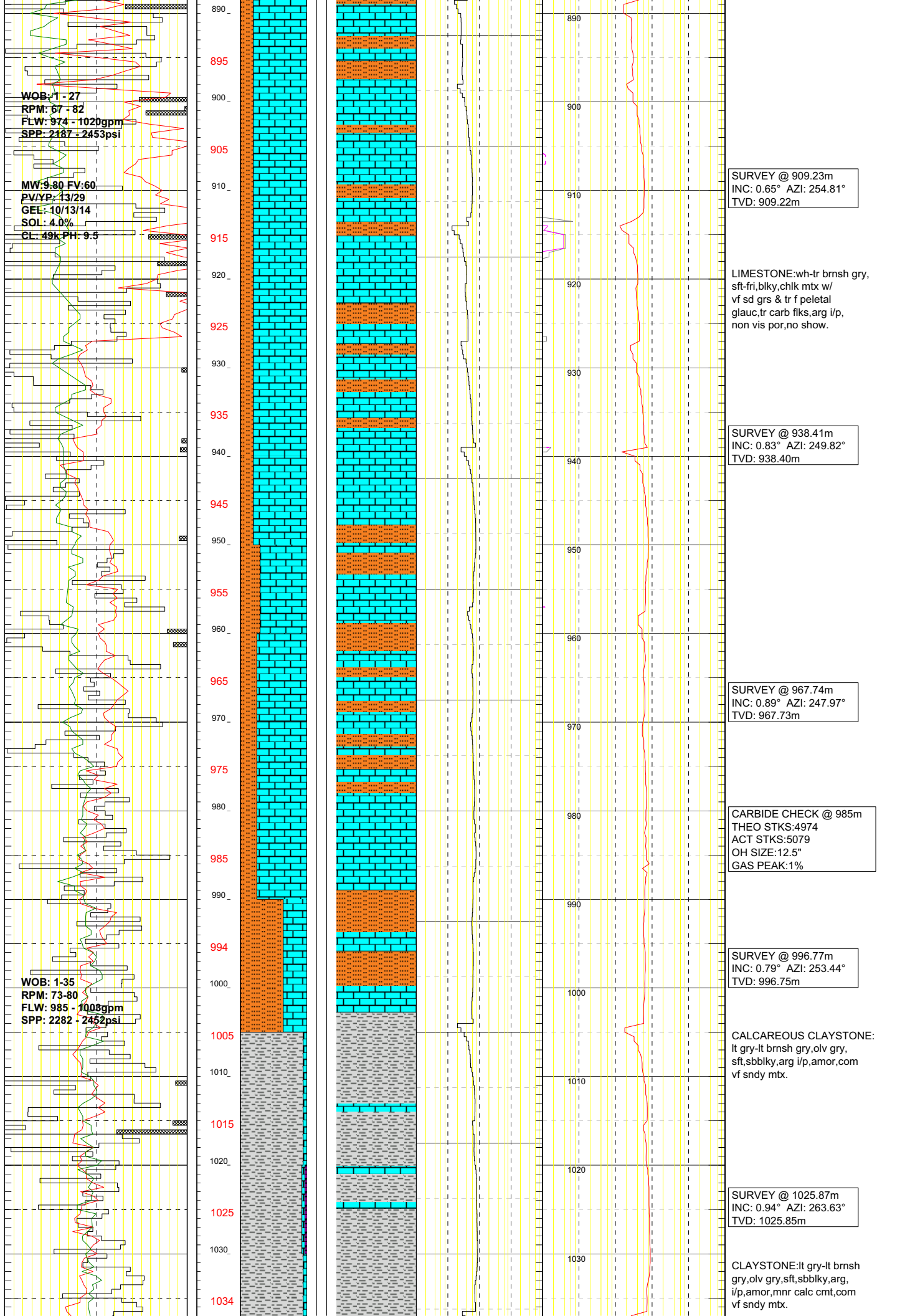
SURVEY @ 850.44m  
INC: 0.38° AZI: 252.66°  
TVD: 850.43m

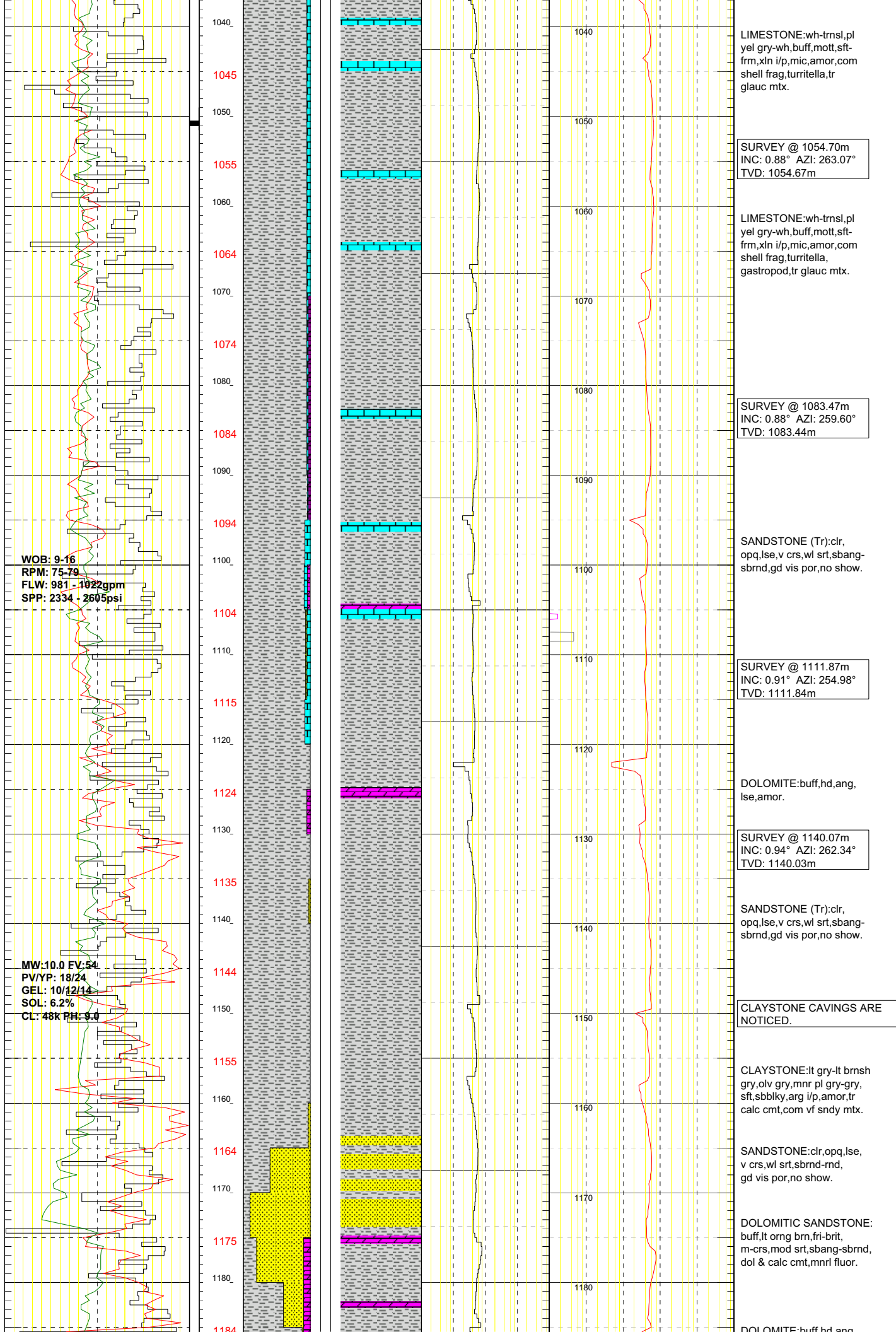
SILTSTONE: lt gry, sft, blk, y,  
arg, sndy, calc, tr glauc.

LIMESTONE: wh-tr brnsh gry,  
sft-fri, blk, y, chlk mtz w/  
vf sd grs & tr f peletal  
glauc, tr carb flks, arg i/p,  
non vis por, no show.

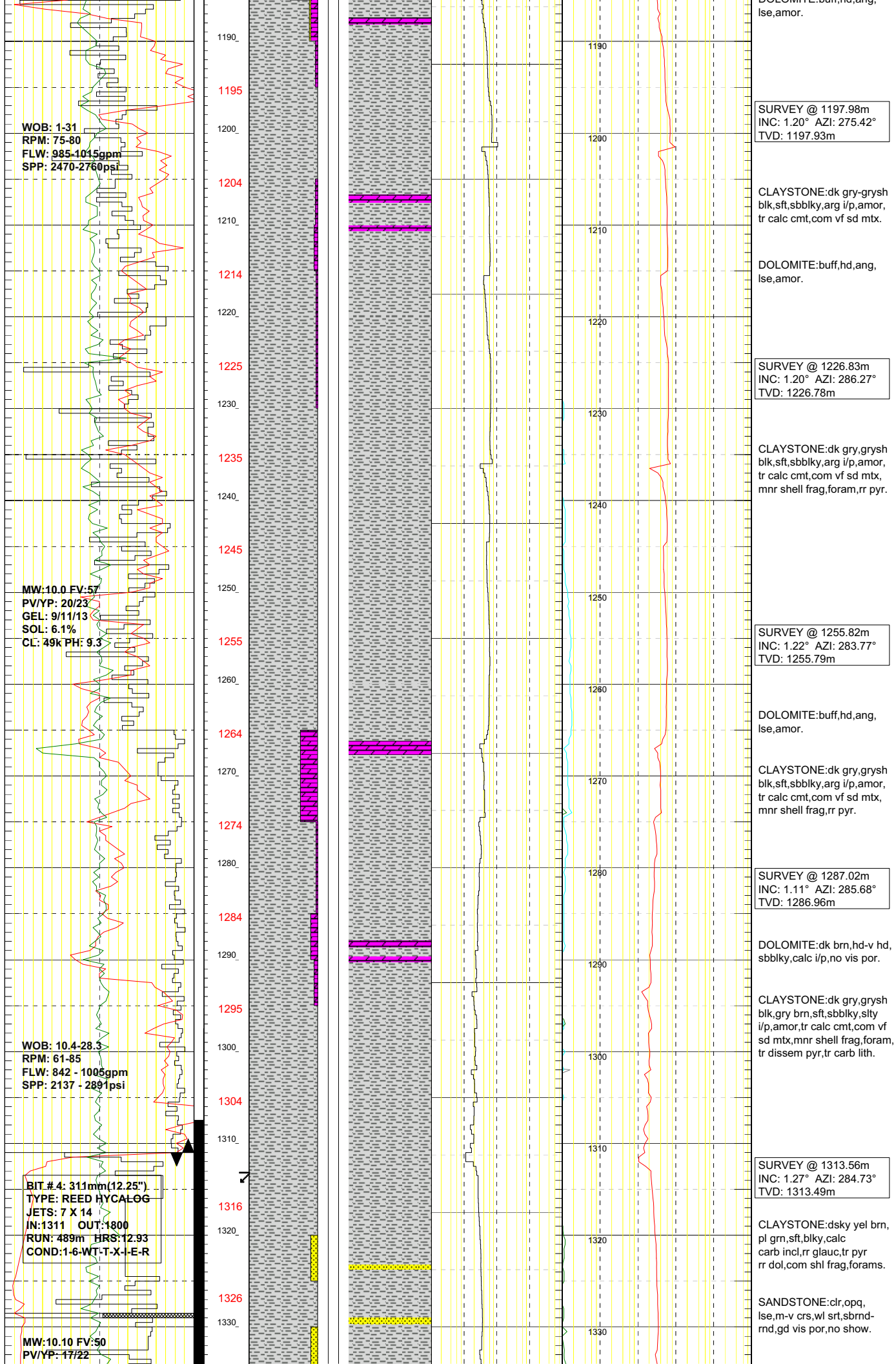
SURVEY @ 879.88m  
INC: 0.57° AZI: 252.68°  
TVD: 879.87m

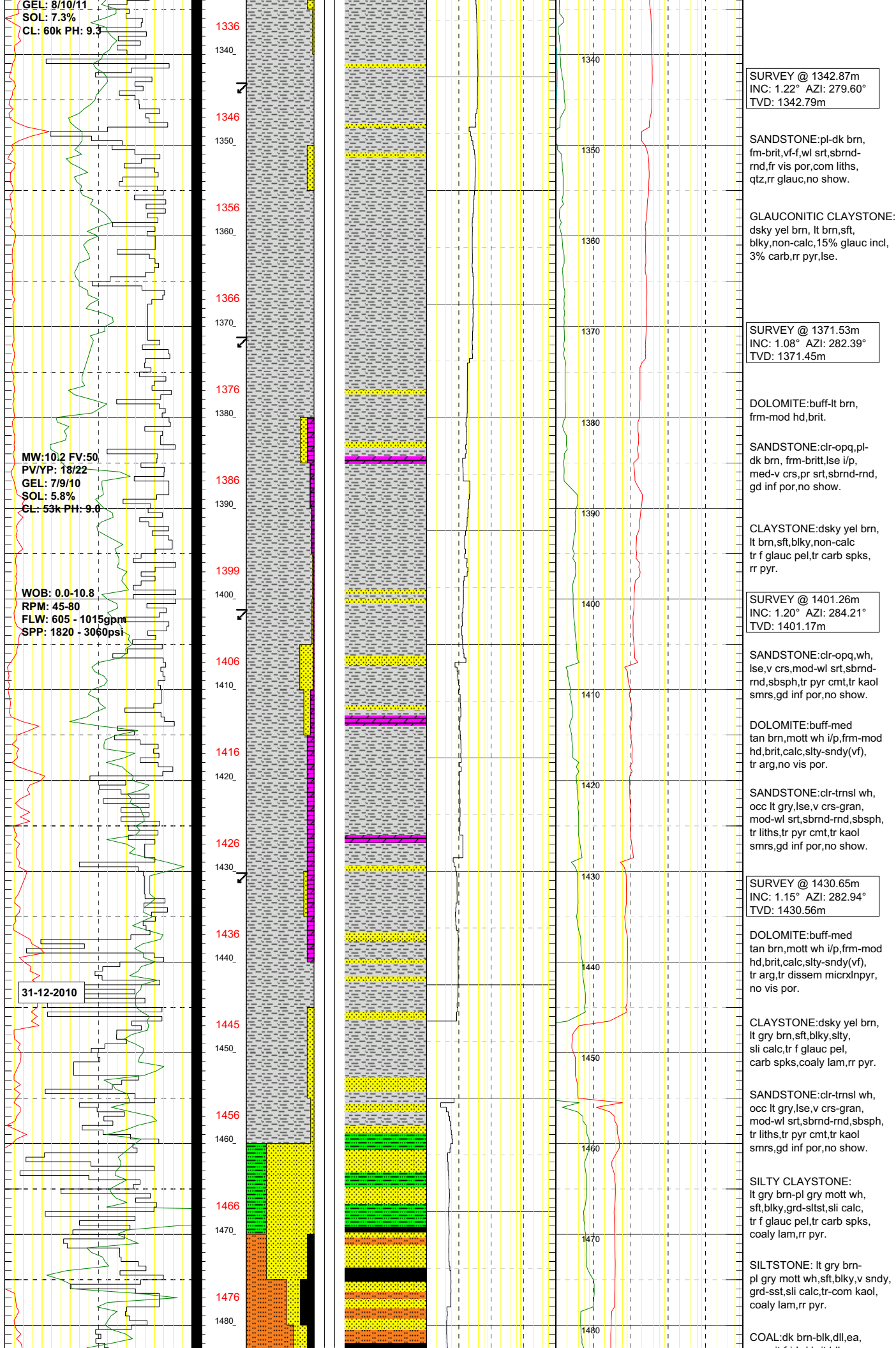
SILTSTONE: lt gry-lt brnsh  
gry, sft, blk, y, arg, sndy, calc,

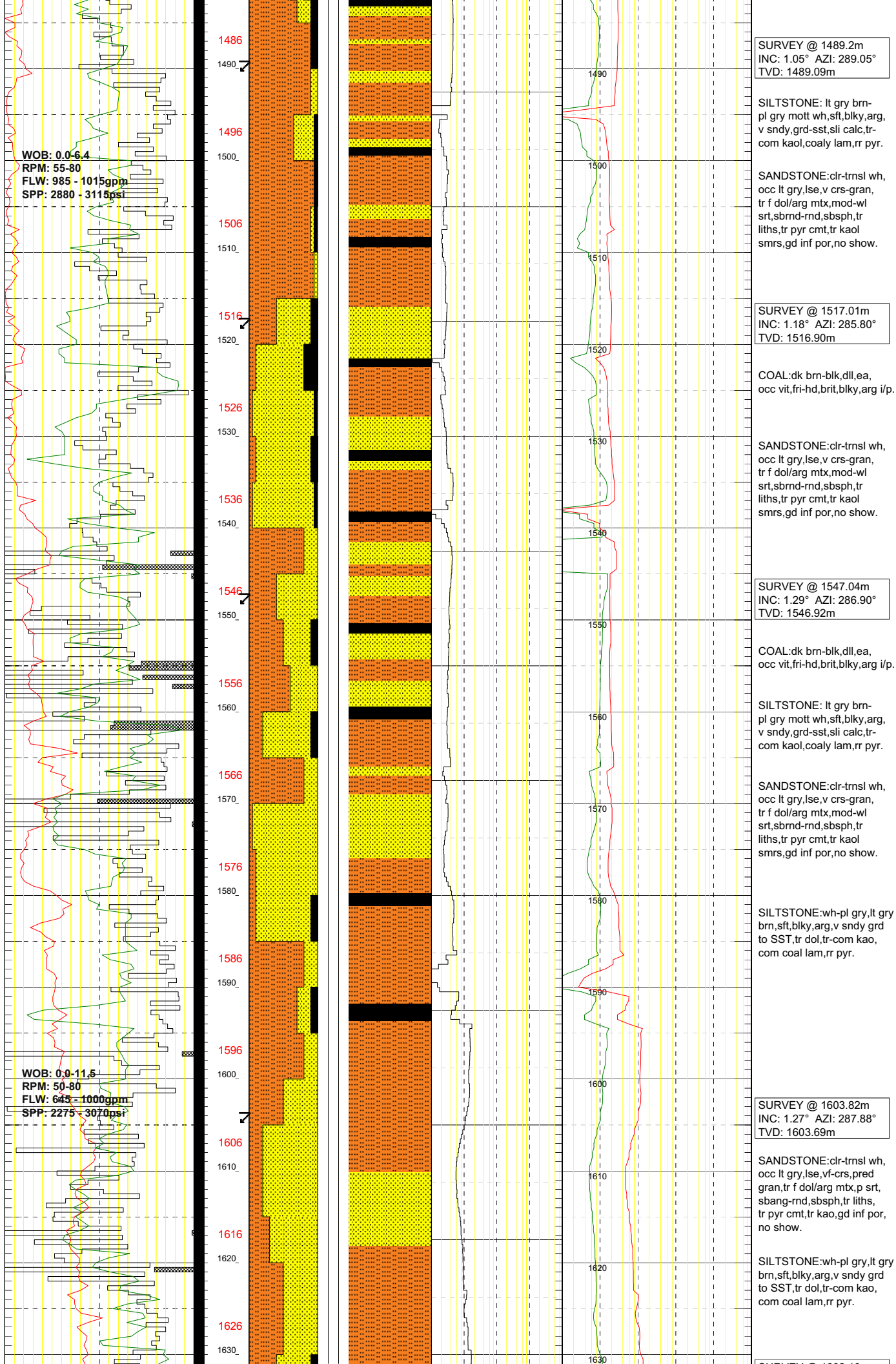


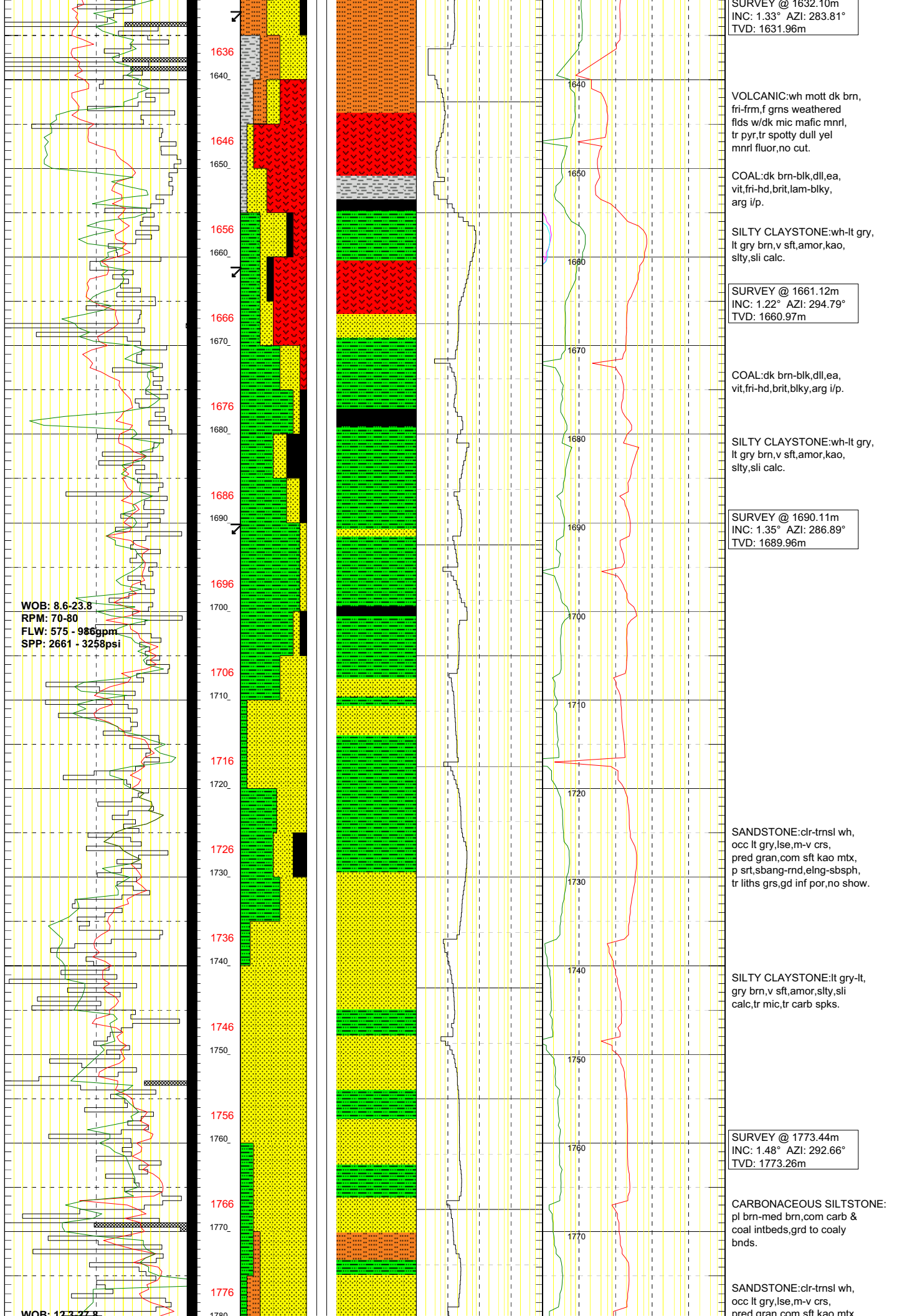


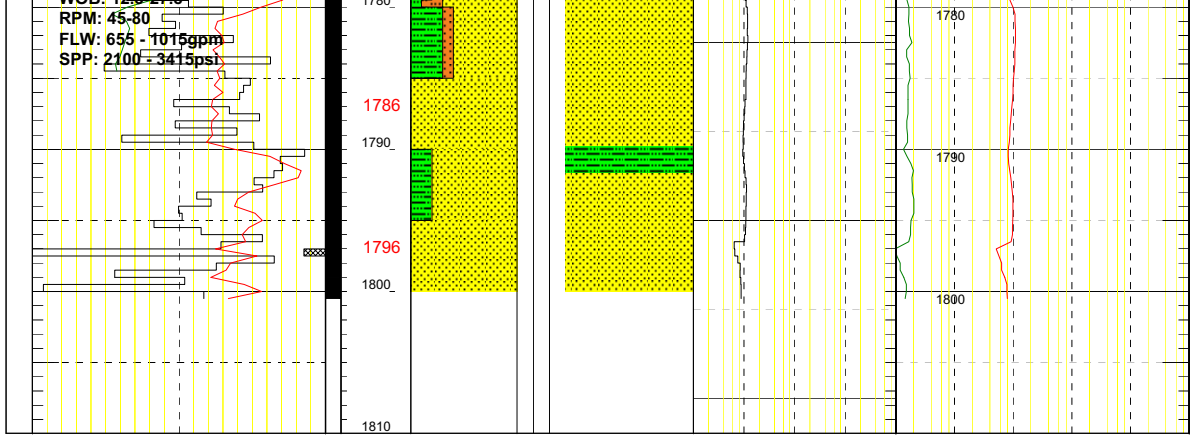












SILTY CLAYSTONE:wh-lt gry,  
lt gry brn,v sft,amor,kao,  
sly,sli calc.

CRAIGOW-1 REACHED TD  
OF 1800mMDRT AT 12:30HRS  
ON 31ST DECEMBER 2010.